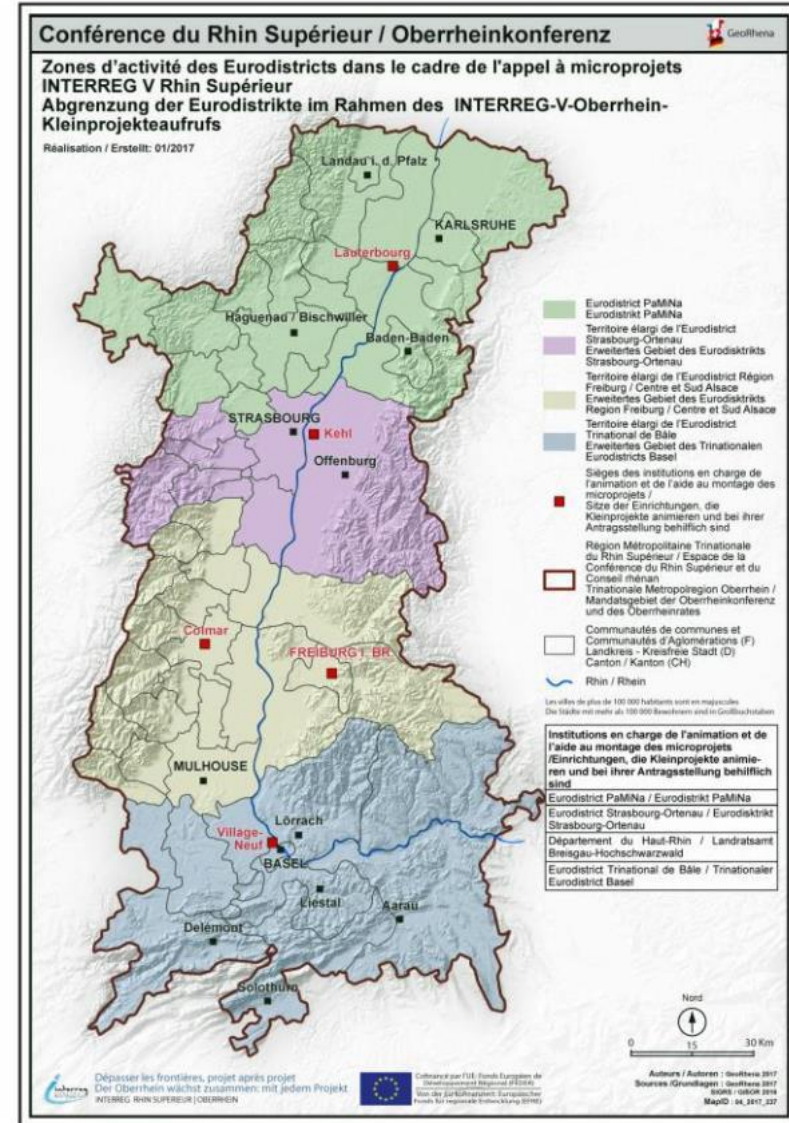


# **KARLSRUHE-RASTATT-HAGUENAU-SAARBRÜCKEN**

**ECONOMIC AND SOCIAL DEVELOPMENT  
OF A BORDER REGION  
BY RECOVERING A MISSING RAILWAY LINK**

# A highly diverse cross-border area



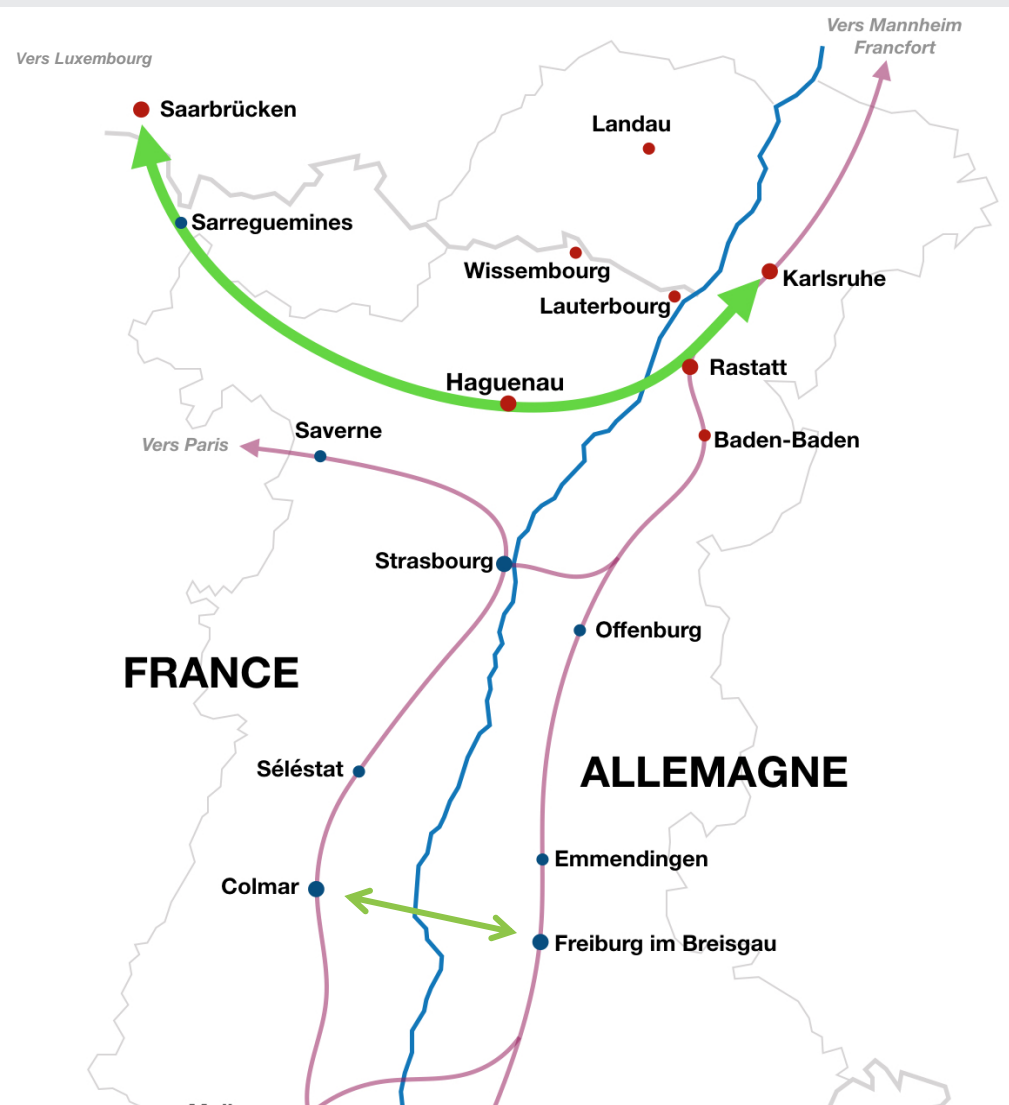
Karlsruhe – Rastatt – Haguenau –  
Obermodern – Saarbrücken:

**160 km**

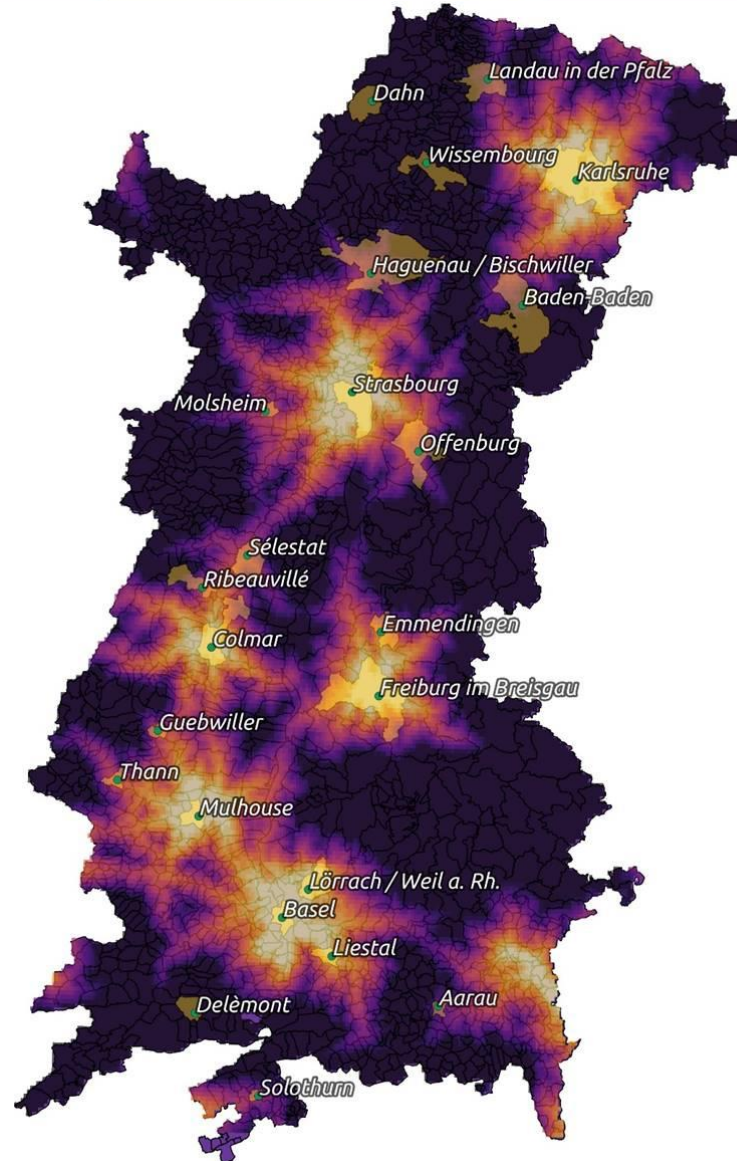
**SECTION TO BE  
REACTIVATED:**

Haguenau – Obermodern:  
~ **58 km**

**out of service**  
~ **40 km**

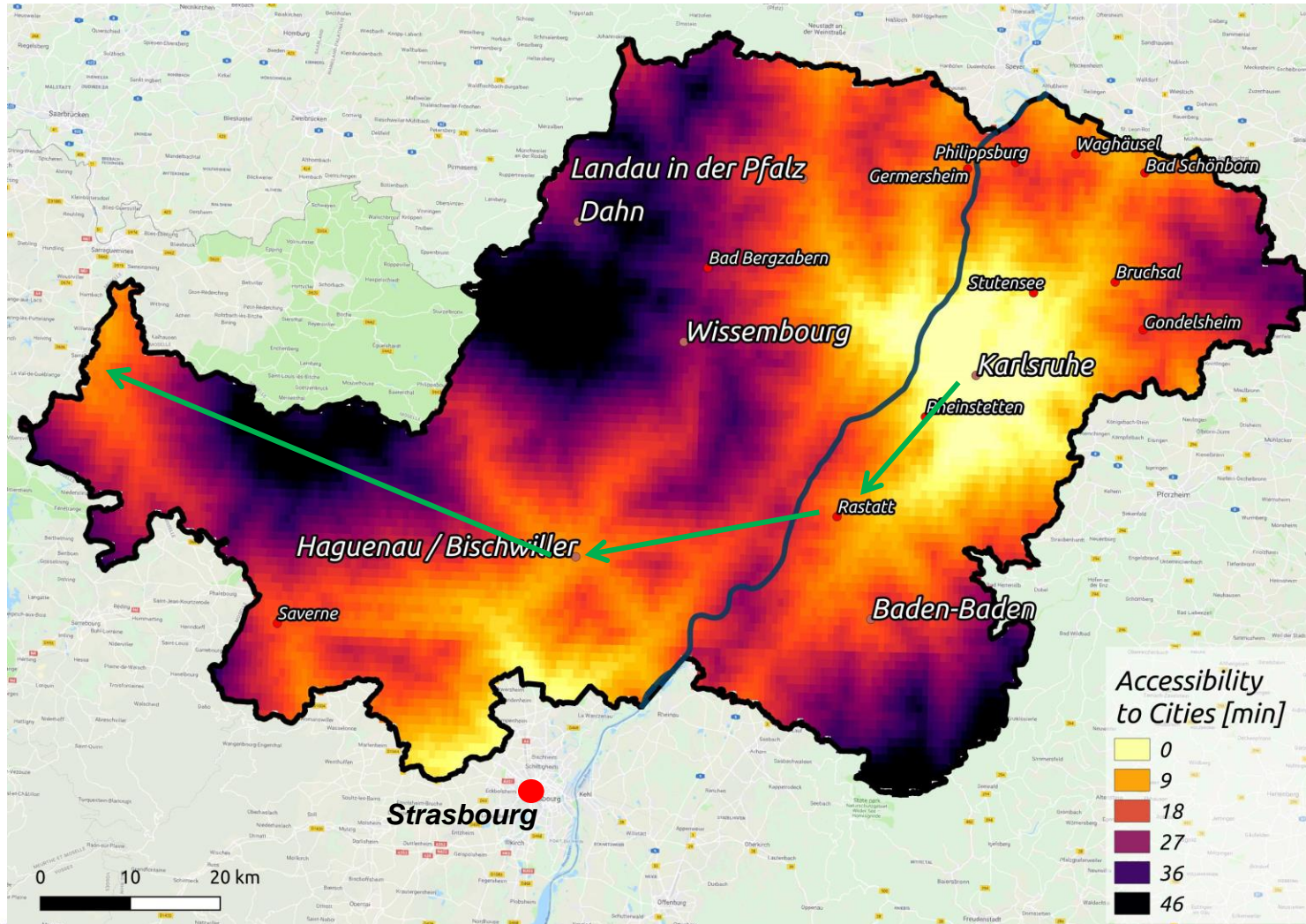


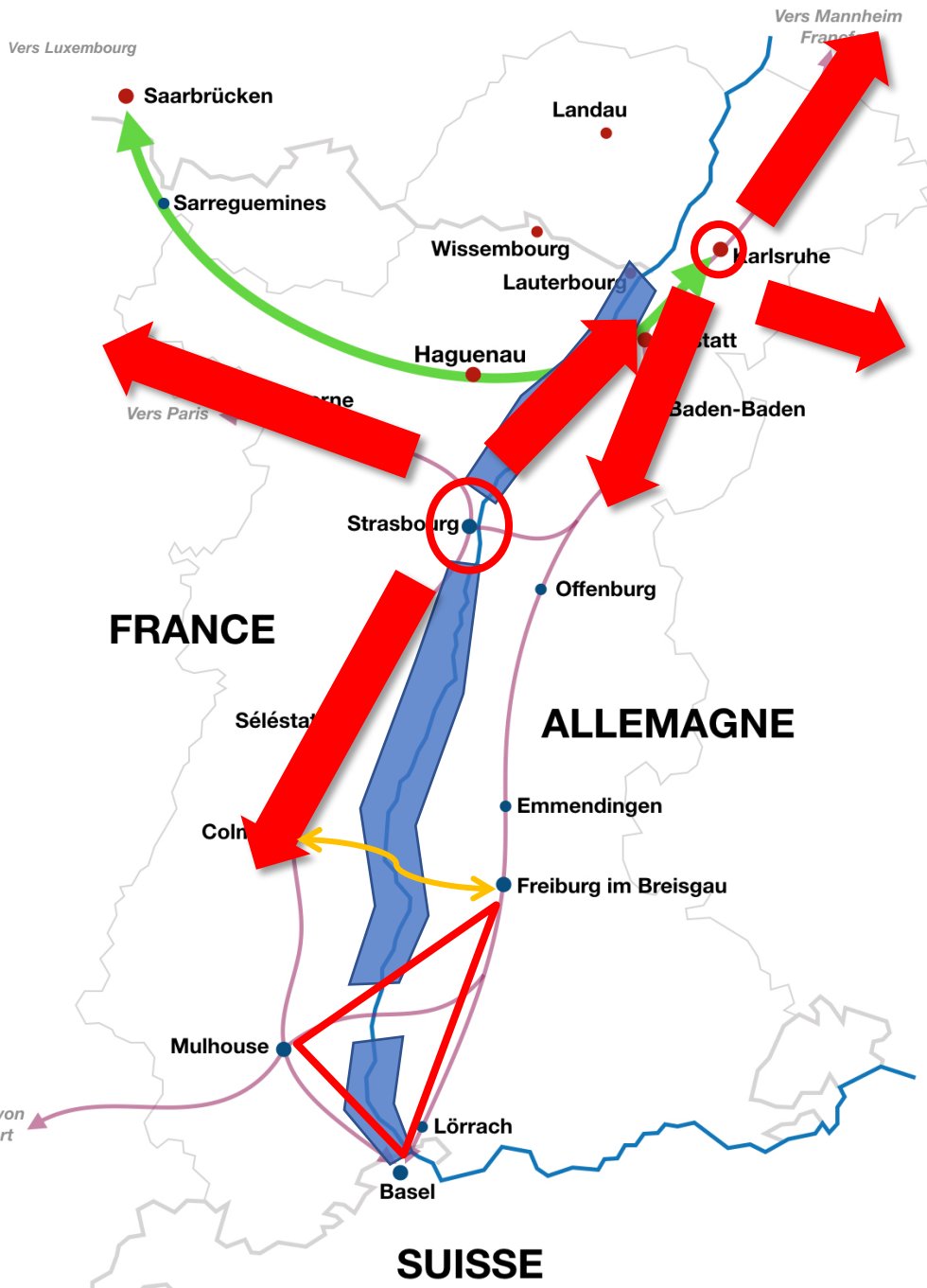
# Accessibility - a matter of course?



Accessibility of cities and municipalities  
on the Upper Rhine  
FELIS 2019

# Erreichbarkeit – eine Selbstverständlichkeit? Accessibilité – une évidence ?





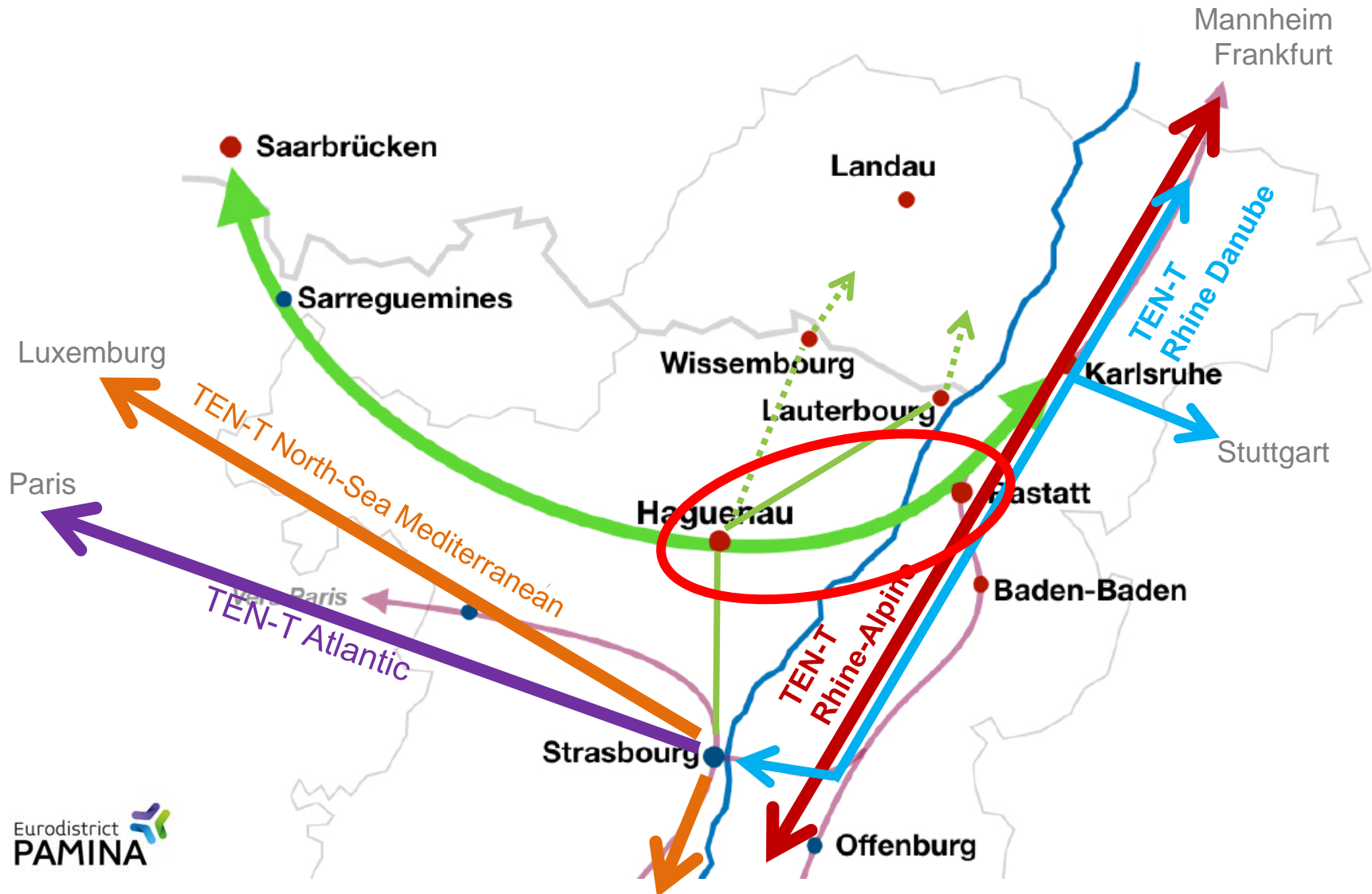
North-South-Infrastructure

The Rhine: an East-West barrier

2 well connected major cities

A well connected triangle in the south

# Which connection for the PAMINA region?



# Why a reactivation?







Trains

MAGAZINE NEWS RAILROADS BLOGS & FORUMS PHOTOS & VIDEOS

Home / News / Tunnel collapse closes key European international route for weeks

### Tunnel collapse closes key European international route for weeks

By Keith Fender | August 23, 2017

RELATED TOPICS: INTERNATIONAL | FREIGHT | OPERATIONS

Trains Industry Newsletter  
Get a weekly roundup of the industry news you need.

FRANKFURT, Germany — Following the collapse of a new high speed rail tunnel being built underneath the German town of Rastatt, about 100 miles south of Frankfurt am Main, the existing main line railway directly above the damaged tunnel workings has been badly damaged with significant sinkholes under the two tracks and has been closed to all rail traffic since Aug. 12.

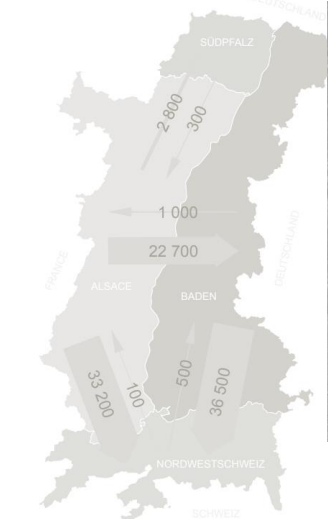
This double-track section of the busy Karlsruhe, Germany, to Basel, Switzerland, main line

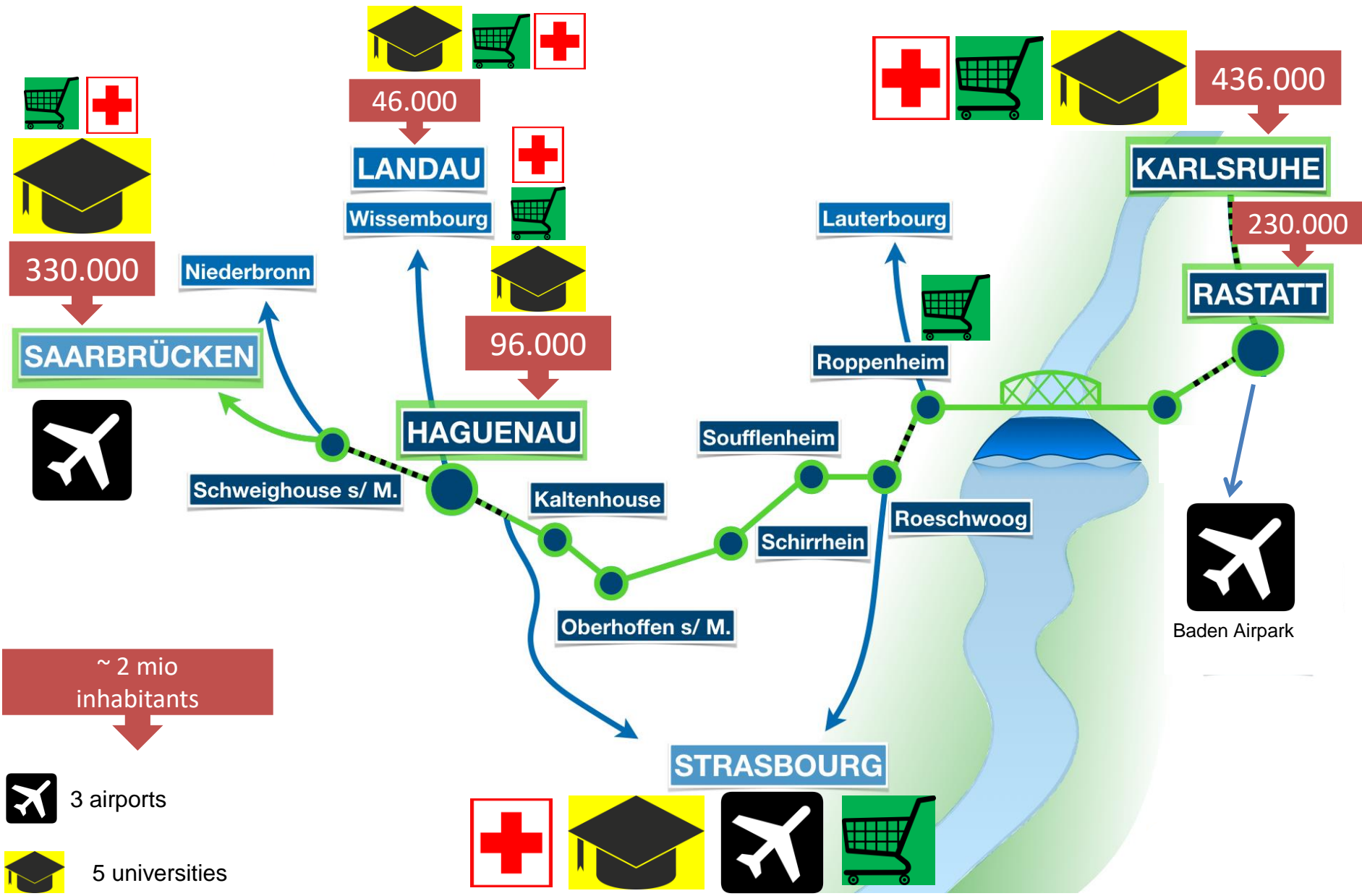
Rhine railway line in normal case

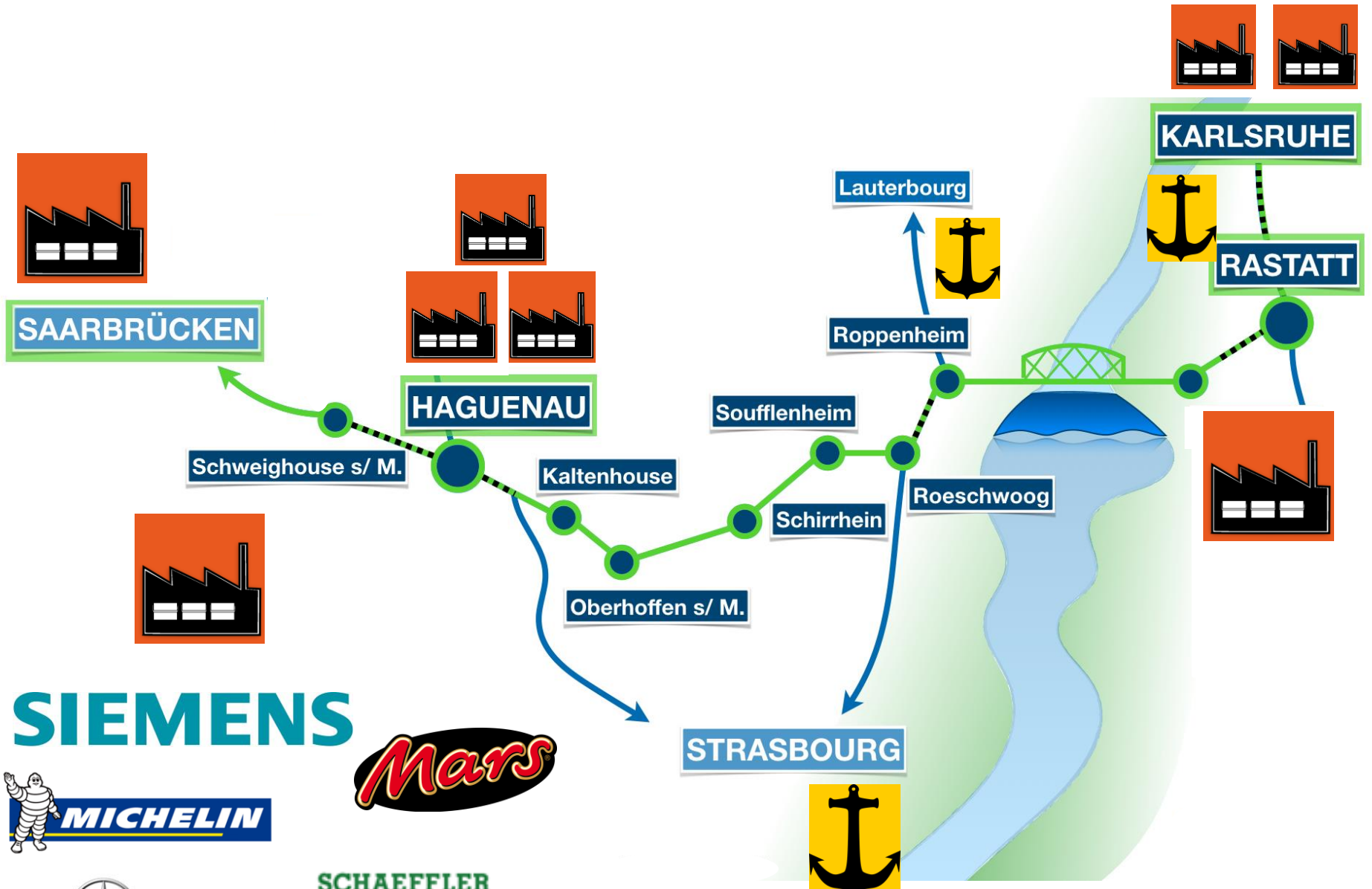
Transit via Rastatt  
 Intermodal trains 120 per day  
 Conventional trains 80 per day  
 Shipments in intermodal transport 70 000 per month

Rhine valley line after Rastatt disruption

# ECONOMIC AND SOCIAL DEVELOPMENT OF A BORDER REGION







**SIEMENS**



SCHAEFFLER

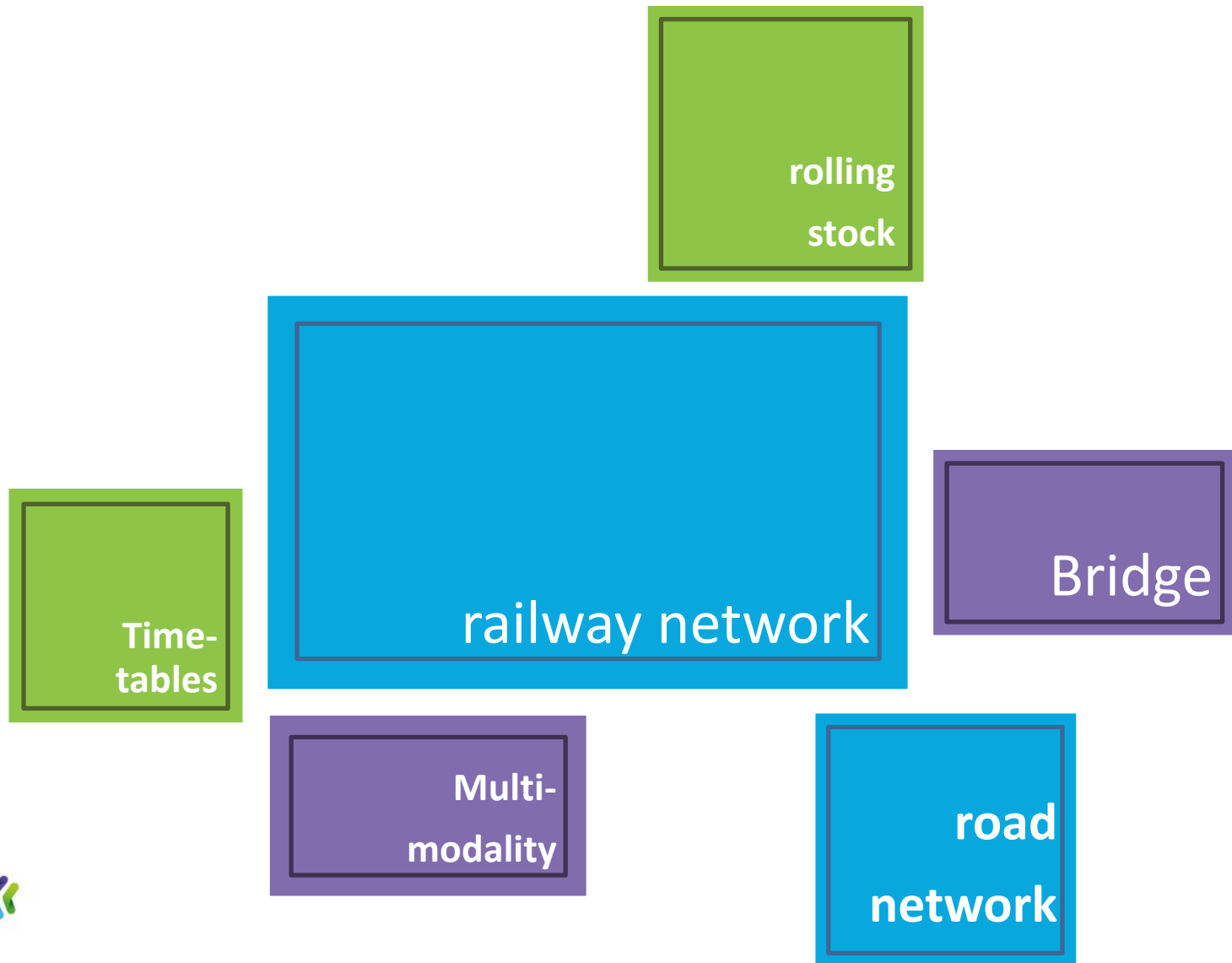


LES GRANDS CHAIS DE FRANCE  


**ALSTOM**



# Reactivation alone is not enough



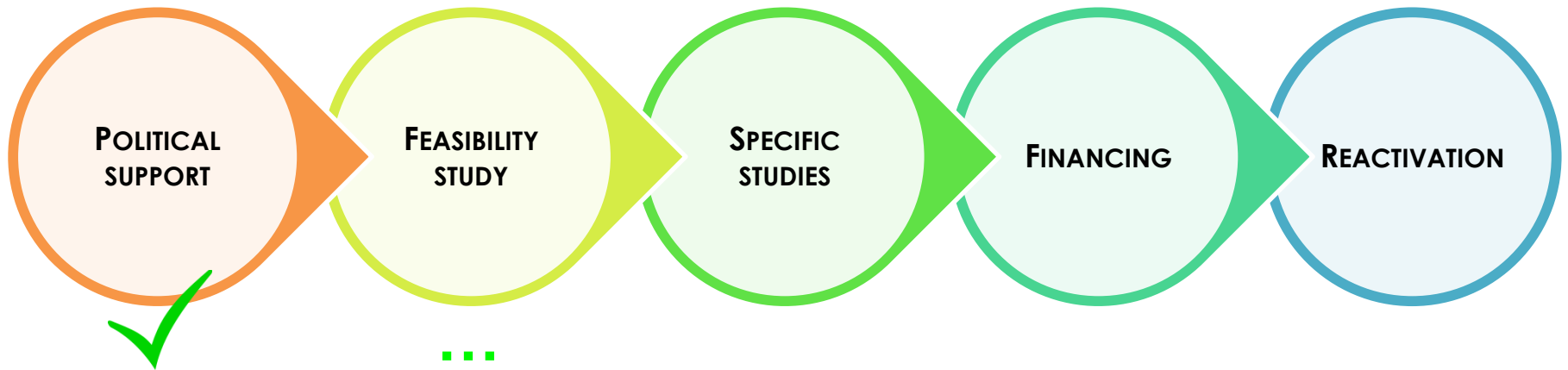
# Reactivation alone is not enough

Multimodality



Mobility Action  
Plan PAMINA

# A medium-term project that requires short-term actions





Updates and Video on the project:



[www.eurodistrict-pamina.eu](http://www.eurodistrict-pamina.eu)

## CONTACT

**Dr. Patrice HARSTER**

Director

+ 33 3 68 33 88 20 | + 49 7277 / 89 990 20

[patrice.harster@eurodistrict-pamina.eu](mailto:patrice.harster@eurodistrict-pamina.eu)

**Nelly SÄMANN**

+ 33 3 68 33 88 22 | +49 7277 89 990 22

[nelly.saemann@eurodistrict-pamina.eu](mailto:nelly.saemann@eurodistrict-pamina.eu)